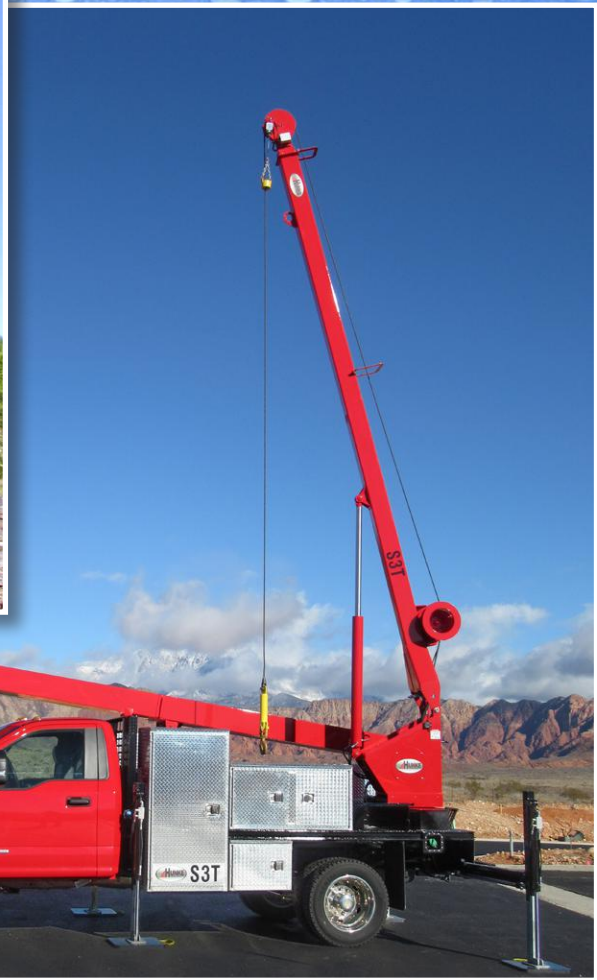
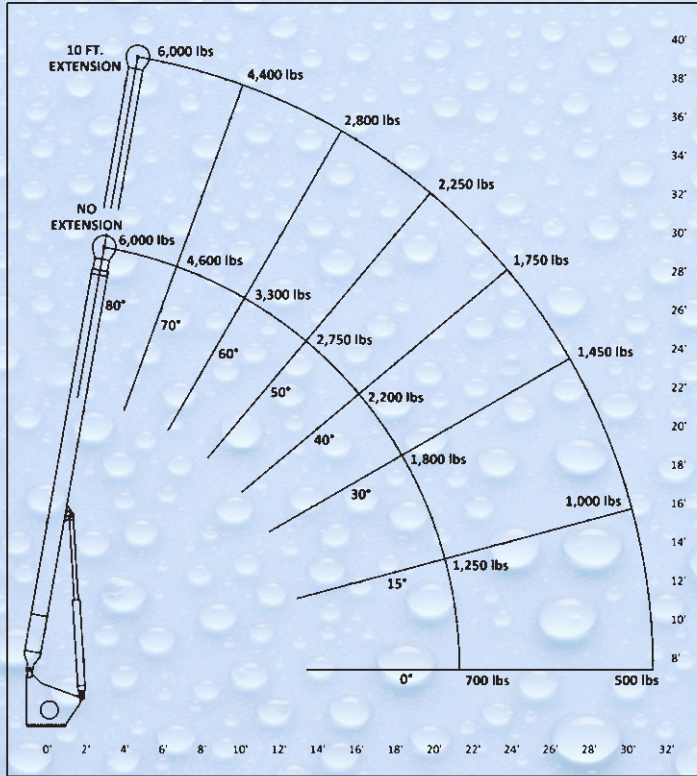


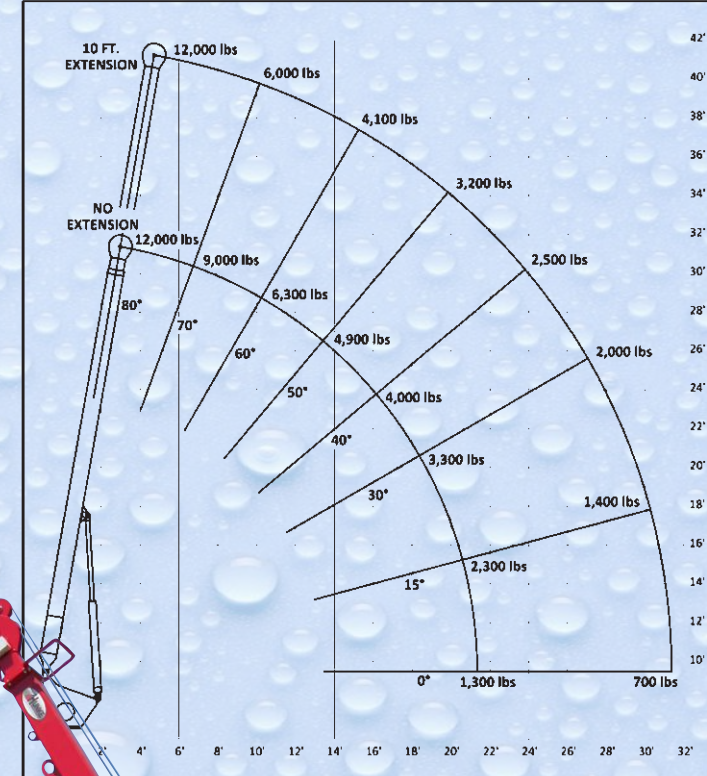
Hoist Model	Main winch single line pull rating - lbs.	Max line part	Max capacity lbs.	Single line speed fpm	Sandline bare cap. lbs.	Sandline speed fpm	Sandline spool cap. 3/8" cable	Standard mast height-ft.	Max horizontal reach - ft.	Main winch location
S3T	3,000	2	6,000	140	1,000	**260/520	1,200	40	31	Mast
S6T	6,000	2	12,000	150	2,300	**260/520	1,200	42	31	Mast
						**2-speed				



HUNKE S3T PUMP HOIST LOAD RATING CHART
 WARNING! DO NOT EXCEED THE RATED LOAD!
 2-PART LINE OPERATIONS SHALL BE PERFORMED ONLY AT REAR.
 READ AND UNDERSTAND THE OPERATOR'S MANUAL BEFORE LIFTING.



HUNKE S6T PUMP HOIST LOAD RATING CHART
 WARNING! DO NOT EXCEED THE RATED LOAD!
 2-PART LINE OPERATIONS SHALL BE PERFORMED ONLY AT REAR.
 READ AND UNDERSTAND THE OPERATOR'S MANUAL BEFORE LIFTING.



Continuous 360°
3000 lbs. Capacity - S3T
6000 lbs. Capacity - S6T
(single line)

